

# Cathedral Parishioner Survey

---

18 – 19 MAY 2019

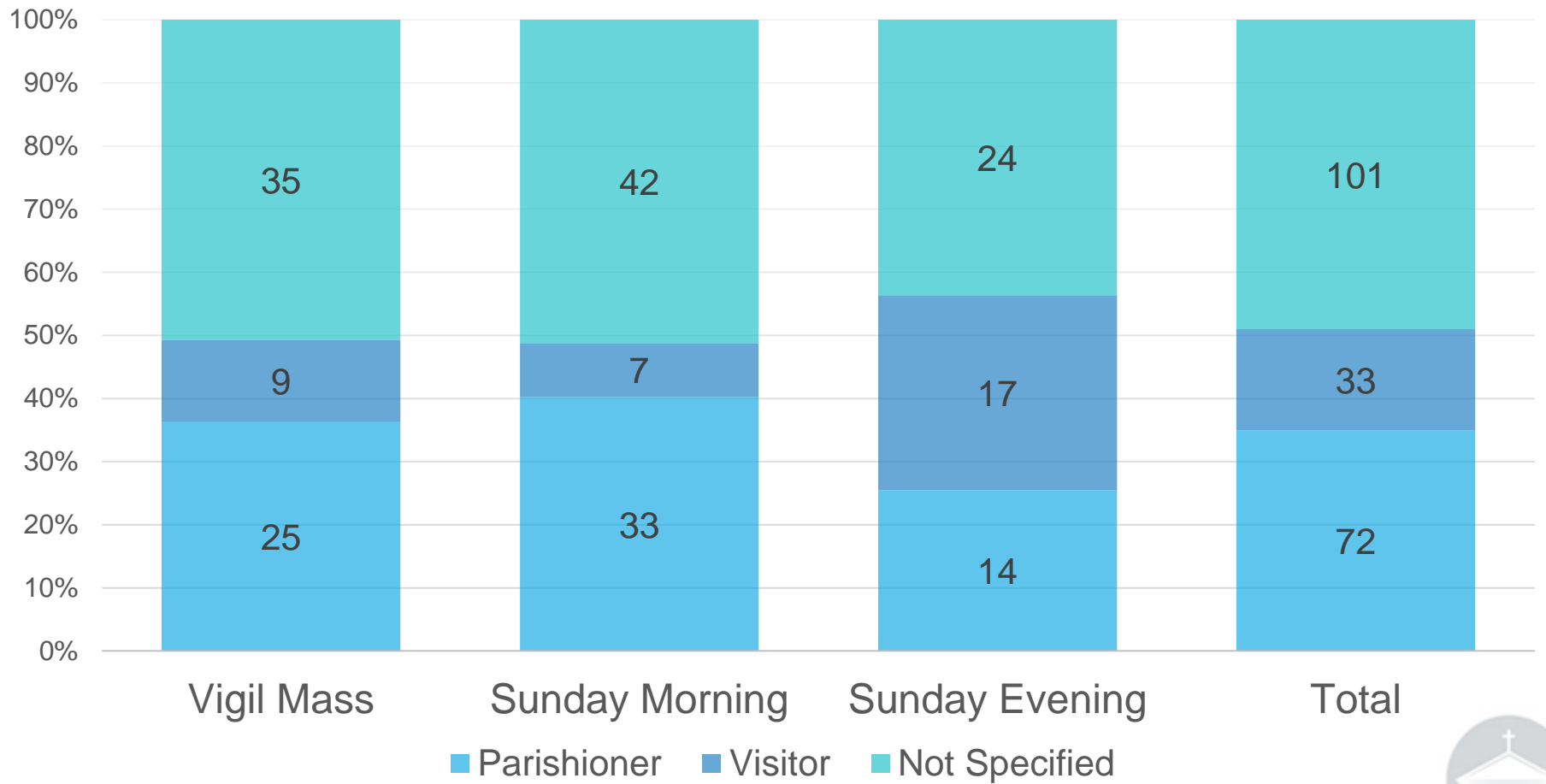
25 – 26 MAY 2019

# 18 – 19 May 2019

Parishioner or Visitor	Vigil Mass	Sunday Morning	Sunday Evening	Total
Parishioner	25	33	14	72
Visitor	9	7	17	33
Not Specified	35	42	24	101



## PARISHIONERS OR VISITORS



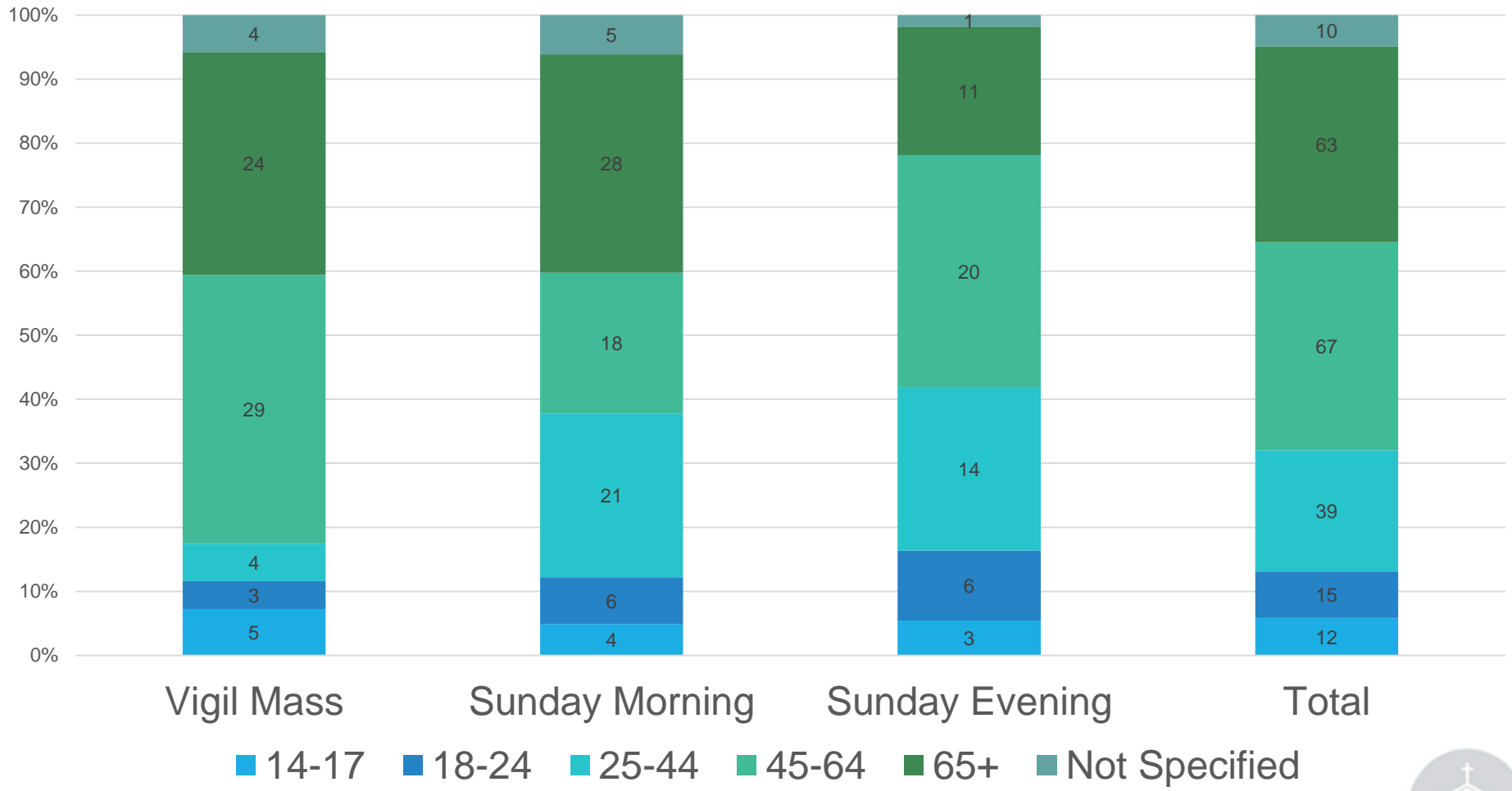
# 18 – 19 May 2019

Age Group	Vigil Mass	Sunday Morning	Sunday Evening	Total
14-17	5	4	3	12
18-24	3	6	6	15
25-44	4	21	14	39
45-64	29	18	20	67
65+	24	28	11	63
Not Specified	4	5	1	10



# 18 – 19 May 2019

Age Group



## How well does our Parish...

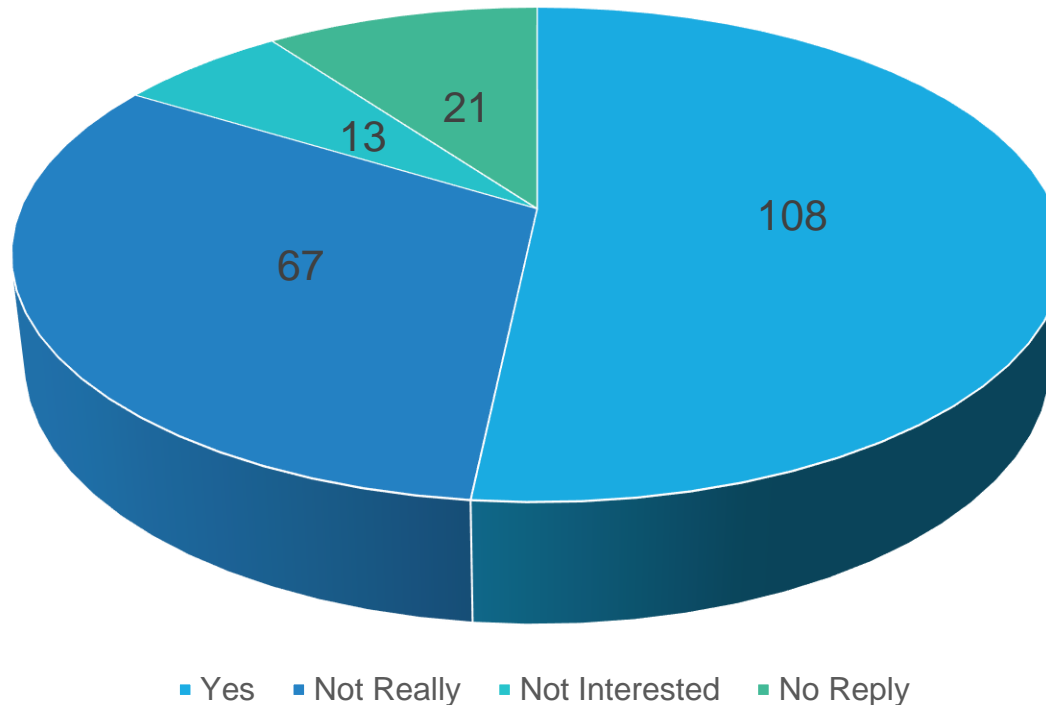
Statement	Mode
...work together to build an open and welcoming faith community?	5
...ensure, through discernment that our material assets are appropriate for, and best meet the needs of our community?	5
...encourage parishioners to share their time, talent, and treasure for the common good of the wider community?	5
...actively identify and seek out those who are in need?	4
...work with other church associations in planning joint activities, missions, and services to the wider community?	5
...ensure that our spaces are available for other uses?	6
...care for and maintain our assets appropriately for future generations?	5
...provide care and support for those who serve? PP, LPL, Parish Council, volunteers?	5
...meet the needs and challenges of being the Metropolitan Cathedral?	5

# 18 – 19 May 2019

My gifts, talents and time are being wisely used within our parish community.

Statement 1	Yes	Not Really	Not Interested	No Reply	Total
Count	108	67	13	18	206
%	<b>52.43%</b>	<b>32.52%</b>	<b>6.31%</b>	<b>8.74%</b>	

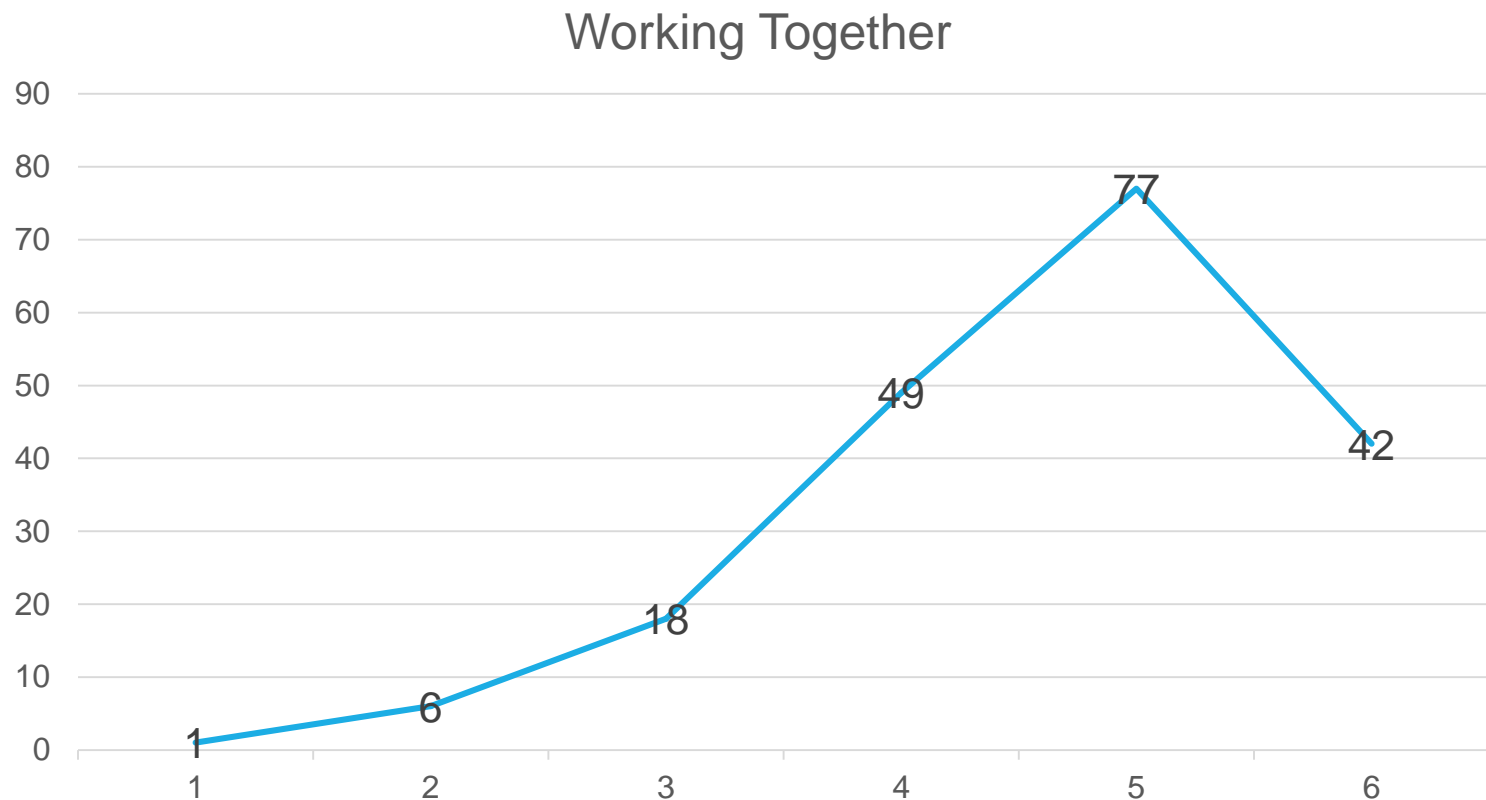
Use of gifts, talents, and time within our parish



# 25 – 26 May 2019

How well does our parish work together to build an open and welcoming faith community?

	1	2	3	4	5	6
Count	1	6	18	49	77	42



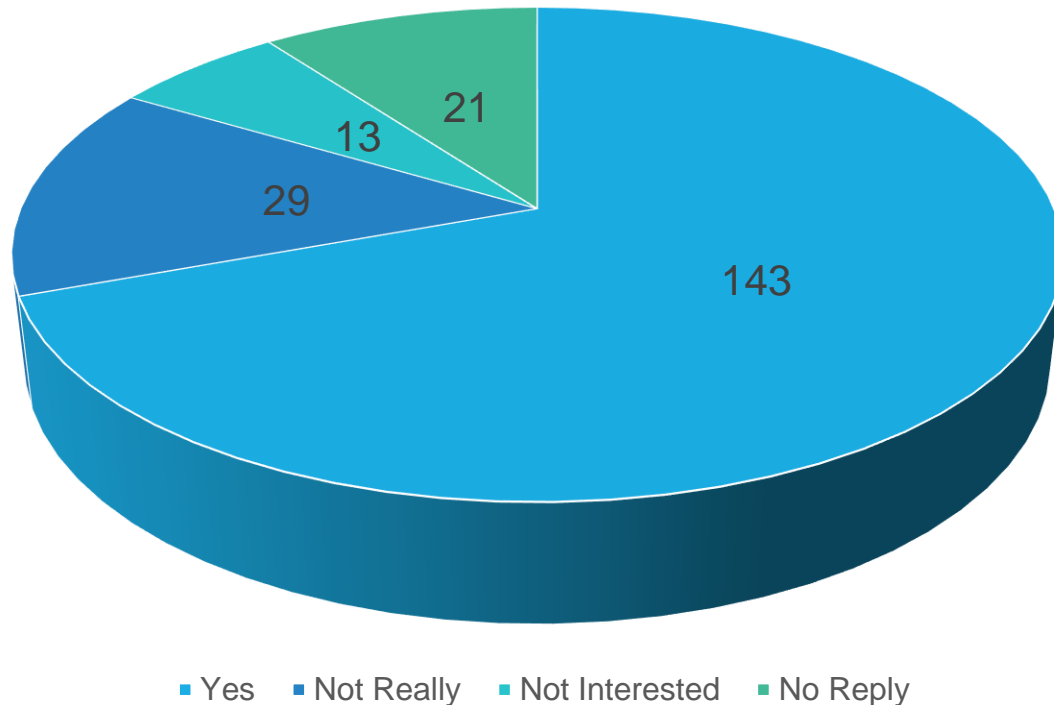


# 18 – 19 May 2019

I feel appreciated for the things that I do in serving the parish.

Statement 3	Yes	<i>Not Really</i>	<i>Not Interested</i>	<i>No Reply</i>	<i>Total</i>
Count	143	29	13	21	206
%	<b>69.42%</b>	<b>14.08%</b>	<b>6.31%</b>	<b>10.19%</b>	

I feel appreciated in serving the parish

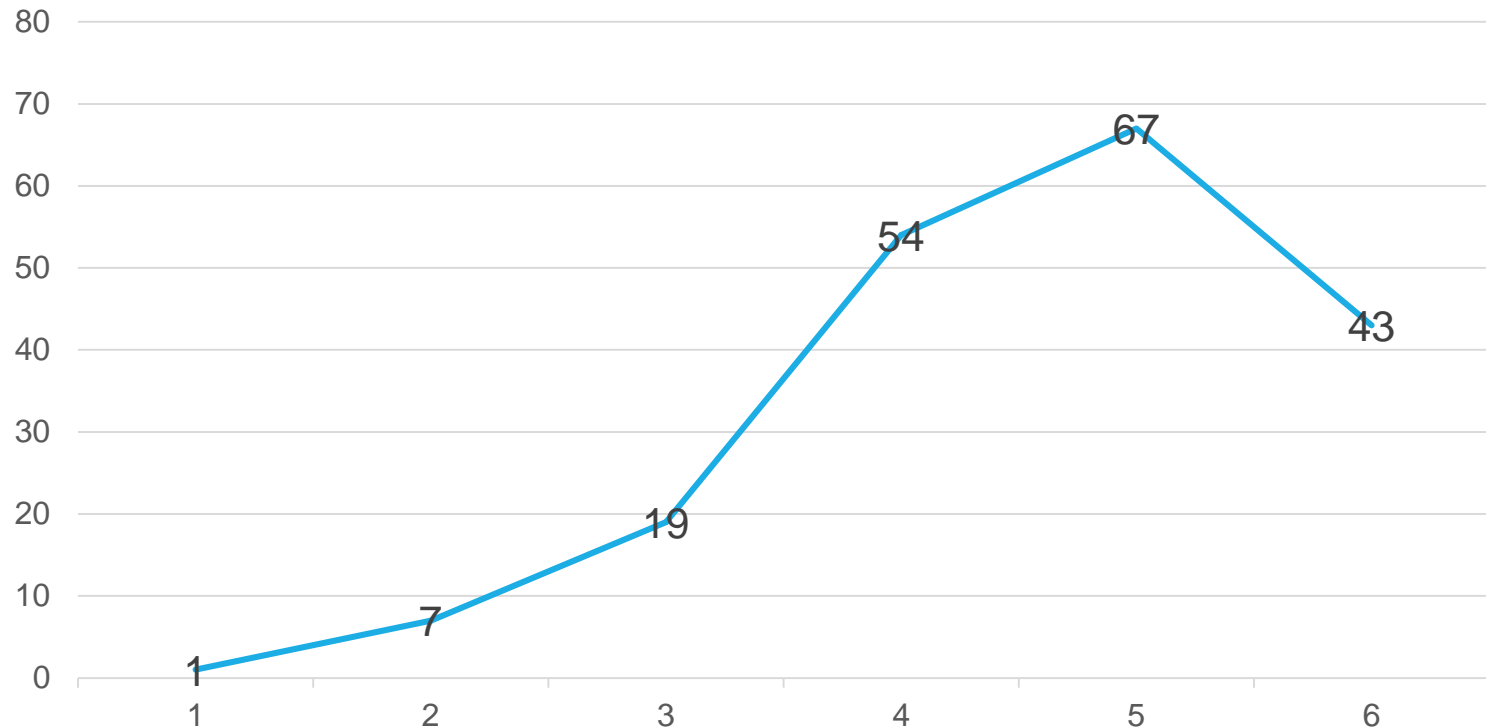


# 25 – 26 May 2019

How well does our parish encourage parishioners to share their time, talent, and treasure for the common good of the wider community?

	1	2	3	4	5	6
Count	1	7	19	54	67	43

Encouraging to share time, talent, and treasure

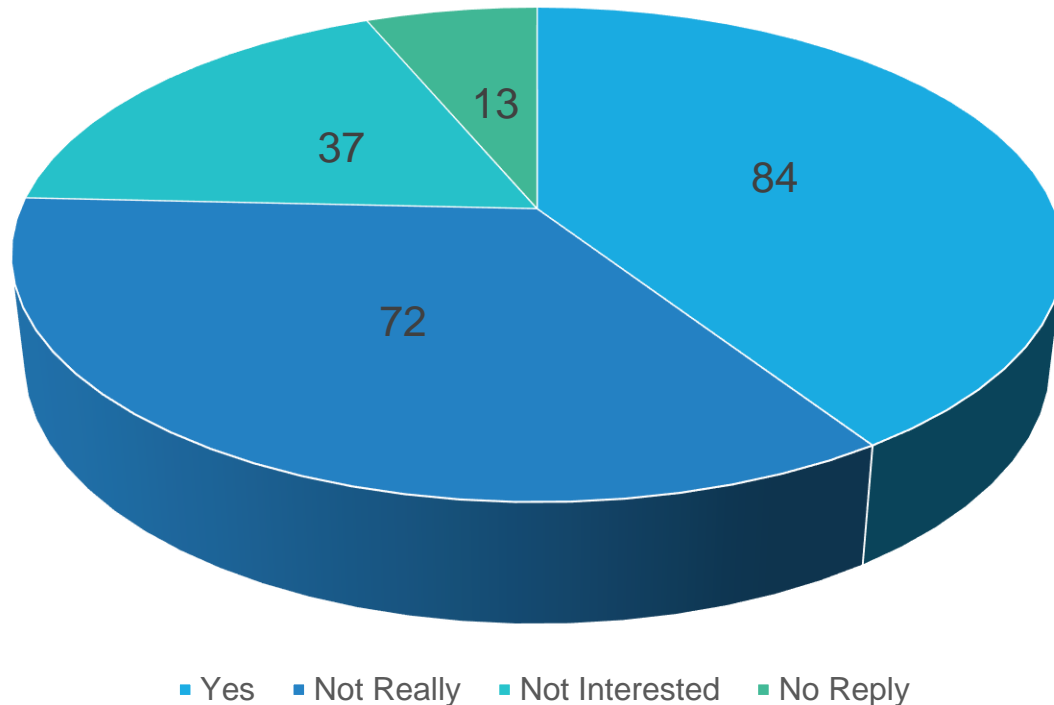


# 18 – 19 May 2019

I am open to joining established pastoral prayer and service groups in neighbouring parishes.

Statement 8	Yes	<i>Not Really</i>	<i>Not Interested</i>	<i>No Reply</i>	<i>Total</i>
Count	84	72	37	13	206
%	<b>40.78%</b>	<b>34.95%</b>	<b>17.96%</b>	<b>6.31%</b>	

I feel appreciated in serving the parish



# 25 – 26 May 2019

How well does our parish work with other church associations in planning joint activities, missions, and services to the wider community?

	1	2	3	4	5	6
Count	1	19	38	46	60	24

